



Questionnaire Hydraulic Lifting Tables

No. of Pages:

Customer.	Client -#
Messrs.	Tel. 
Street / P.O. Box No. ..	Fax. 
Zip code City.....	E-mail
Point of Contact: Mr. / Mrs.	Position

Quantity:

I. For which application is the Hydraulic Lifting Table required?

for example, Loading Platform, Levelling Compensation Platform for Tooling Machinery)

FOR LIFTING CARS

.....

II. Technical Data

a) Lifting capacity	P	kg
b) Platform dimensions	A x B	mm x mm
c) Lift (= effective lift, excluding headroom)	L	mm

Attention! Due to the Scissors Principle the lifting height of the platform is approx. 60 % of the platform length (by single scissors). Double vertical scissors are recommended only as an exception, since the closed height (building height) would be double and with a more expensive price.

d)	Electrical current 400 V / 50 Hz, or :	
e)	Control current 42 V / 50 Hz, or:	
f)	Lifting speed, standard or:	
g)	Weight distribution: --about equal --unequal: Indicate site plan --rolling surface load	
h)	How many lifting cycles are anticipated (at which height) --per hour --per work day --multiple shift operation?	

III. Installation

Is the platform installation in a pit anticipated, whereby the platform in a driven-in condition will be even with the floor level, or will the lifting platform be installed in an unconfined area?	
Will the platform be driven over by a truck in a lowered position whereby the platform must be reinforced to withstand a 5 t wheel pressure (= 10 t axle load)?	

IV. Operation

a)	The operation is normally performed by means of a push button pendant box with „Lifting-Lowering“ on a 3 m length control cable (Deadman’s control))	
b)	Upon request the control can also be equipped with a Key Switch	
c)	or via a Foot Switch	
d)	With Automatic Control (for example via photo cell), we shall require an exact description as to how this will be needed.	

V. Exist any unusual operating conditions?

a)	Heavy dust environment (e.g. cement or sawdust)?	
b)	Should the lifting platform in the raised position remain in this driven out condition for a lengthier period of time?	
c)	Will a special paint finish respectively the platform surface coating be required?	
d)	Abnormal environmental temperatures?	

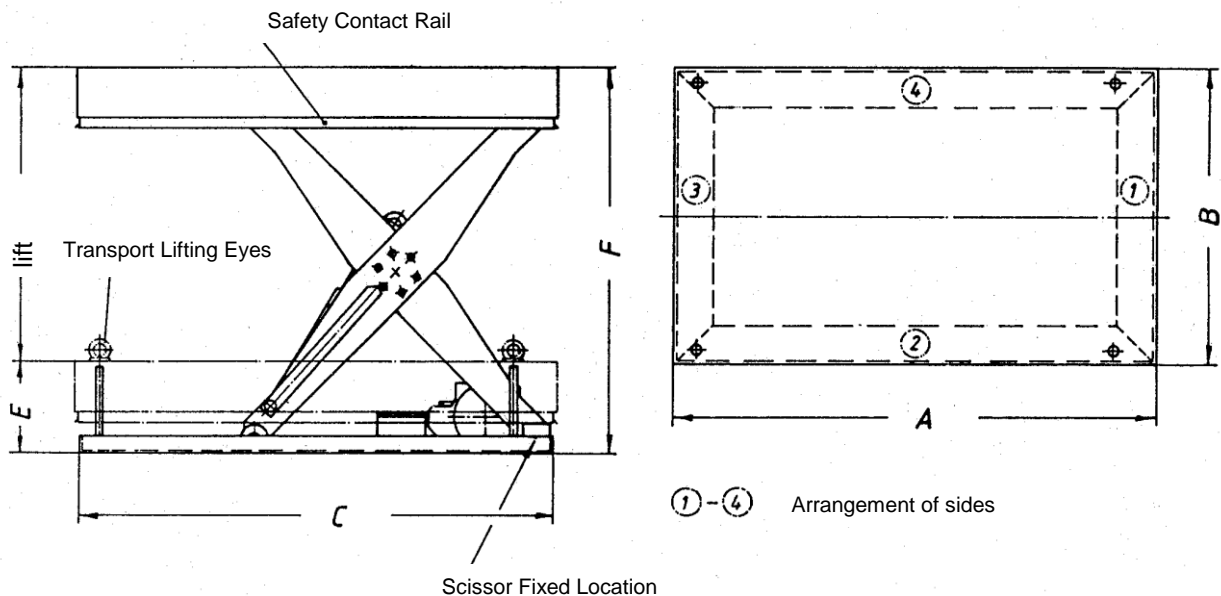
VI. Accessories

Each lifting table will be equipped with standard all-round safety contact bars located under the platform. Furthermore our Tables are equipped with overload valve, tube break valve and inspection supports.




In addition, the lifting tables can be outfitted with different Accessories, for example:

a)	Gangway flaps (cross-over the space between the lifting table and the truck bed. (Where? Which location?))	
b)	Safety Side Railings (required with operating passenger).	
c)	Traversing gears (steering rollers or rail-bound design manually or electrically operated.)	
d)	Special accessories according to your individual needs:	

VII. Sketch



VIII. Requested Quotation

<input type="checkbox"/> Abbreviated offer	<input type="checkbox"/> Budget price	<input type="checkbox"/> Offer deadline latest per			
<input type="checkbox"/> Detailed offer	<input type="checkbox"/> Required Delivery Date				

Enclosures:
<input type="checkbox"/> Sketch
<input type="checkbox"/> Plan / Dimensional Drawing #.. ..
<input type="checkbox"/>

_____ Date: _____ Signature: _____